



FLEXCORD™ LINEPIPE

Reinforced with high strength galvanized steel cords, **FlexCord Linepipe (FCLP)** is designed to handle frequent on-off pressure cycles and severe pressure pulsations such as those generated by piston pumps to solve your cyclic issues.

INDUSTRY LEADING DURABILITY

Built to exceed the industry requirements of CSA, API and ASTM standards, Shawcor's FlexCord Linepipe is a preferred choice for water transfer and enhanced oil recovery (water and CO₂ injection) applications. Designed with an industry accepted safety factor, our product does not require de-rating and can handle severe cyclic applications.

STEEL CORD DESIGN ALLOWS RAPID DEPRESSURIZATION

Rigorous internal testing confirms no blistering or collapse after repeated cycles of rapid decompression at 1,000 psi / minute. Steel cord design allows for enhanced venting of gasses that permeate through the liner allowing for rapid depressurization.

UP TO 35% INSTALLATION COST SAVINGS OVER STEEL

Smaller crew sizes, less heavy equipment requirements, lower environmental impact, no need for welding or X-ray inspection, no jeeping or corrosion inhibitors; all of which allows operators to bring wells to production faster. Fewer connections result in substantial cost savings over traditional steel pipelines.

MOST RELIABLE CONNECTION SYSTEM

Shawcor's patented crimped connections use hydraulic regulation of crimping pressure rather than manual torque application, which other composite linepipe products chose to use. Crimper dies move independently to allow for variations in pipe wall thickness which consistently creates a robust leak-free connection.

60° C (140° F)
MAXIMUM CONTINUOUS
OPERATING TEMPERATURE

2,250 psi
(ANSI 900)
MAXIMUM OPERATING
PRESSURE

APPLICATIONS:

Oil, gas, water, EOR, H₂S (up to 3,000 ppm) and CO₂ (up to 100%)

ID SIZES:

3 and 4 inch

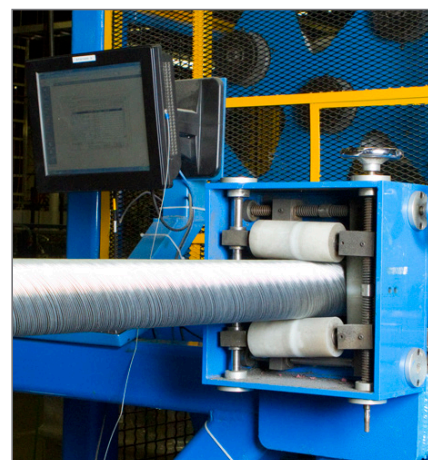
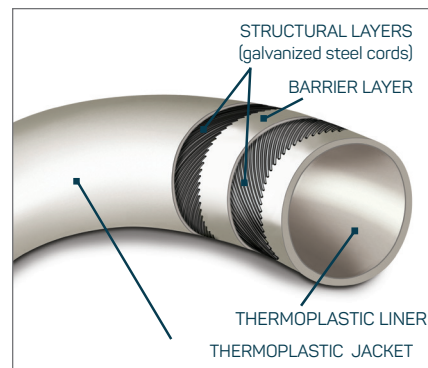
LENGTH PER REEL:

525–615 meters (1,722–2,018 feet)

INSTALLATION:

Trenching, plowing, chain ditching, surface lines, horizontal directional drilling (HDD), liner pulls (remediation)

Engineered for high frequency 225 psi peak-to-peak pressure pulsations, combined with 10 full pressure on-off cycles of 0-1,500 psi per day with a 10x safety factor eliminating the need for de-rating in most cyclic applications.



		FC901	
MAXIMUM OPERATING PRESSURE @ 60°C OR 140°F		15,510 KPA / 2,250 PSI	
Nominal Size		3"	4"
Outside Diameter	Metric (mm)	100	129
	Imperial (inches)	3.95	5.07
Inside Diameter	Metric (mm)	77	99
	Imperial (inches)	3.02	3.90
Weight	Metric (kg/m)	5.1	8.4
	Imperial (lbs/ft)	3.4	5.6
Min. Bend Radius (Operational)	Metric (m)	1.8	2.1
	Imperial (ft)	6	7
Length / Reel	Metric (m)	615	525
	Imperial (ft)	2,018	1,722
Reel Diameter	Metric (m)	3.7	3.7
	Imperial (ft)	12	12
Reel Width	Metric (m)	1.2	2.4
	Imperial (ft)	4	8
Reel Weight - Full	Metric (kg)	3,820	5,560
	Imperial (lbs)	8,415	12,260
Reel Weight - Empty	Metric (kg)	680	1,150
	Imperial (lbs)	1,500	2,530
Fitting Outside Diameter*	Metric (mm)	115.6	144.3
	Imperial (inches)	4.55	5.68
Fitting Inside Diameter*	Metric (mm)	63.5	85.9
	Imperial (inches)	2.50	3.38

Lengths and weights are approximate as they may vary depending on the manufacturing run.

*Fitting dimensions do not include O.D. of flange provided for flanged end fittings.

Fitting O.D. and I.D. apply to flanged end, weld-neck and pipe-to-pipe coupling fittings.

Product data is subject to change without notice. Shawcor's products are patented by US Patents 6,889,716, 6,902,205, 7,946,629 B2 and 8,042,252 B2 by Canada Patents 2,513,506, 2,513,468 and 2,562,823 and by European Patent 1592908. Additional patents are pending. Shawcor products comply with API RP 15S, API 17J, CSA Z662-15, ASTM F2686 and ASTM D2992. ©Shawcor Ltd., 2016

Shawcor Ltd. is a global energy services company specializing in products and services for the pipeline and pipe services segment of the oil and gas industry and related products for petrochemical and industrial markets. The Company operates through a network of fixed and mobile manufacturing and service facilities located around the world and is valued for its integrity, technology, and proven capability to execute the most complex projects in our industry.